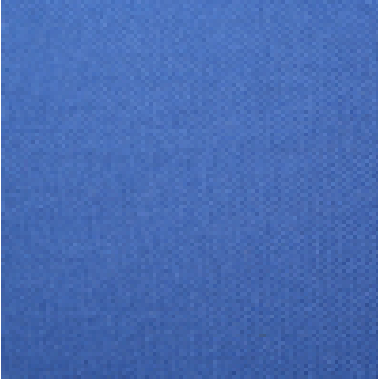


# Flamblend®

Arctic  
008



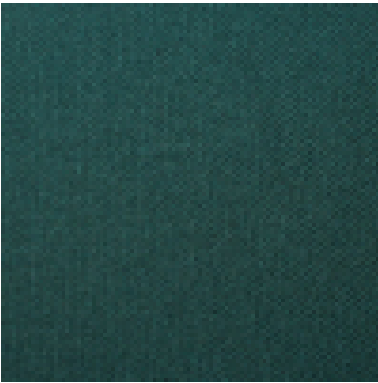
Arizona  
101



Aztec  
010



Balmoral  
011



Bamboo  
117



Blue Slate  
013



Blue Wind  
333



Carnation Red  
016



Cascade  
203



Charcoal  
115



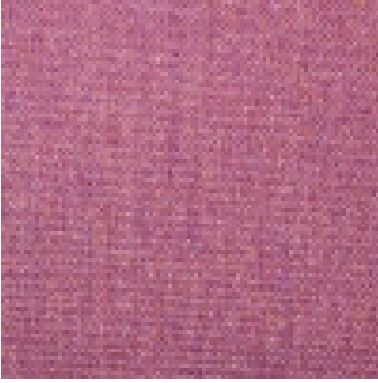
Cinnebar  
018



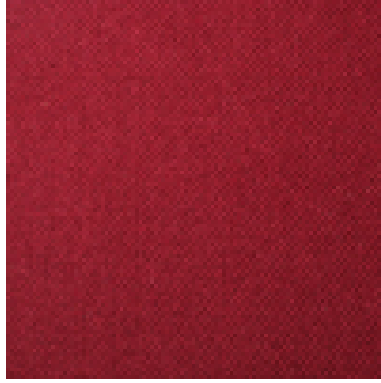
Circus Plume  
332



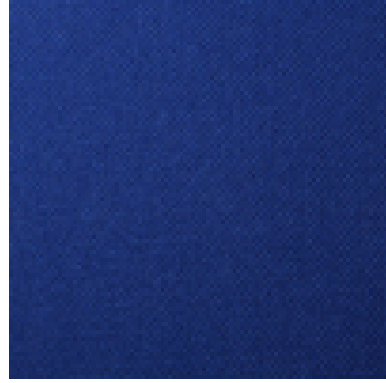
Clover  
220



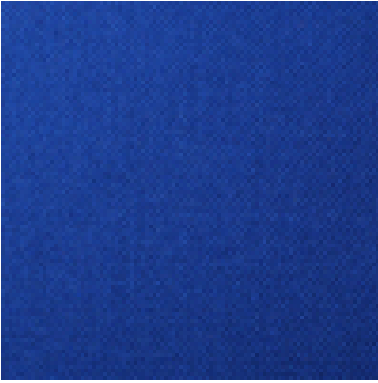
Copper Beech  
019



Deep Blue  
001



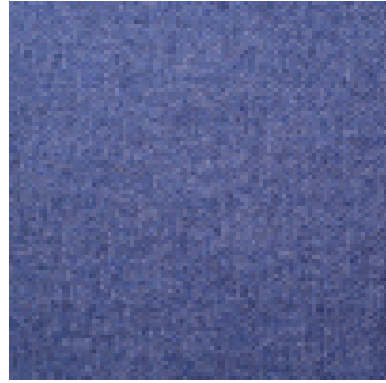
Delphinium  
021



DK Grey  
110



Duckegg  
023



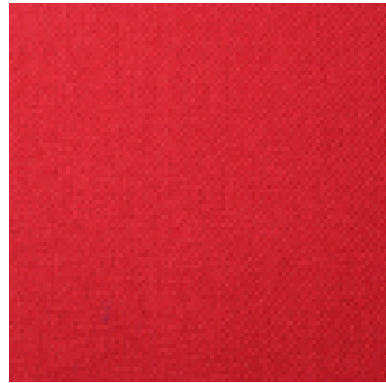
Gunmetal  
025



Heron  
212



Honeysuckle  
028



Indian  
201



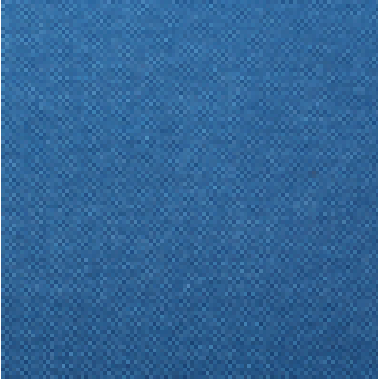
Iris  
029



Kirko  
340



Lake  
030



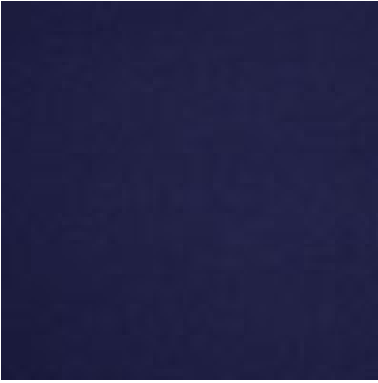
Lupin  
032



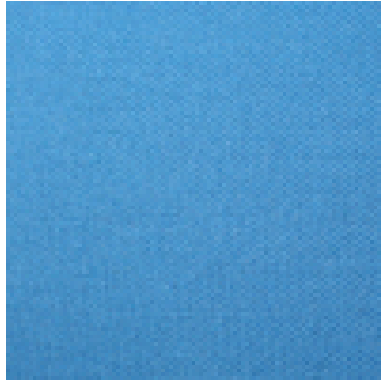
Luska  
330



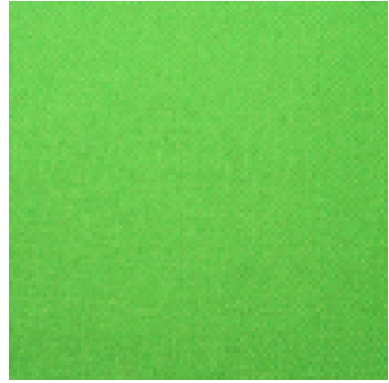
Midnight  
213



Mineral  
037



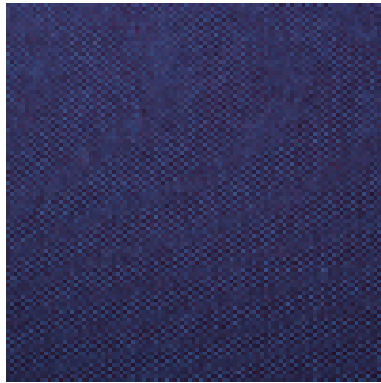
Moss  
039



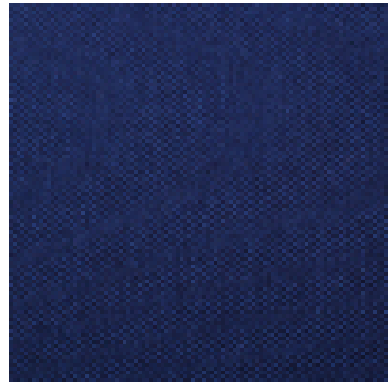
Mustard  
040



Nightsky  
041



Oxford  
043



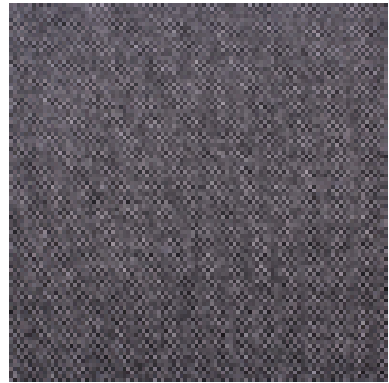
Pansy  
005



Peat  
116



Pebble  
006



Phoenix  
200



Porcelain  
205



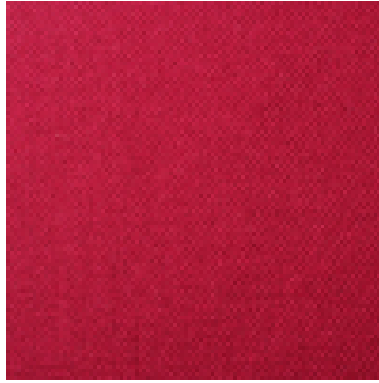
Red Rum  
331



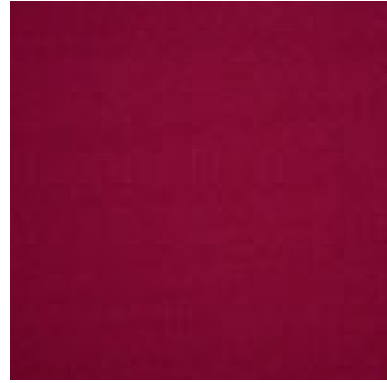
Riviera  
216



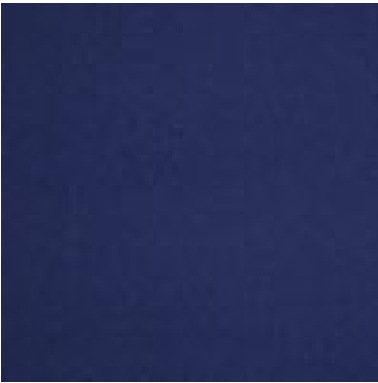
Rosewood  
003



Rouge  
228



Royal  
095



Shell  
053



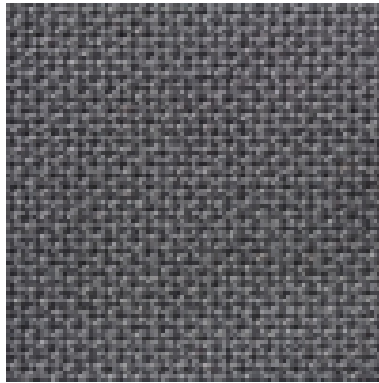
Silver Buck  
339



Sir Ivor  
334



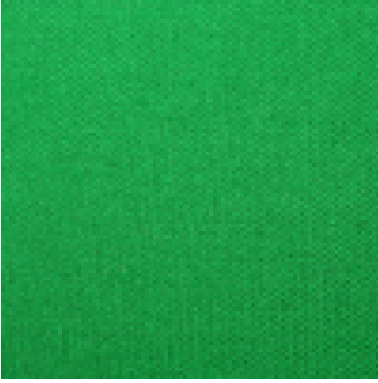
Slate  
054



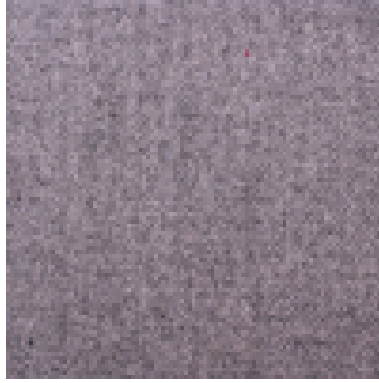
Soot  
055



Spring Leaf  
056



Stone  
057



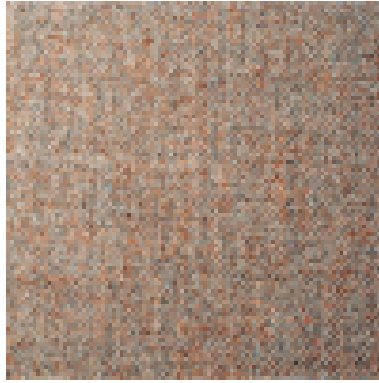
Sunset  
058



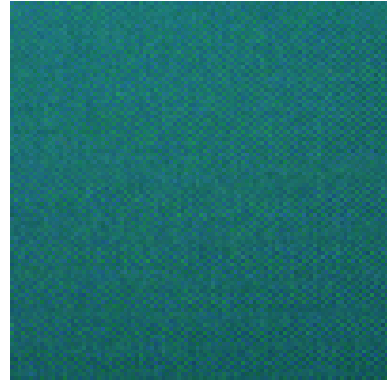
Tangerine  
059



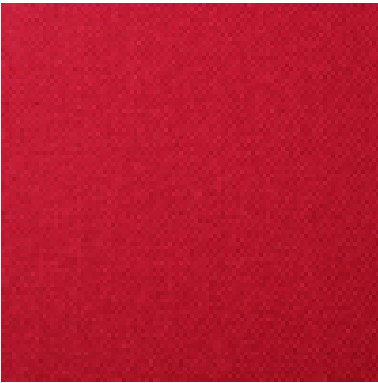
Tawny  
060



Verde  
064



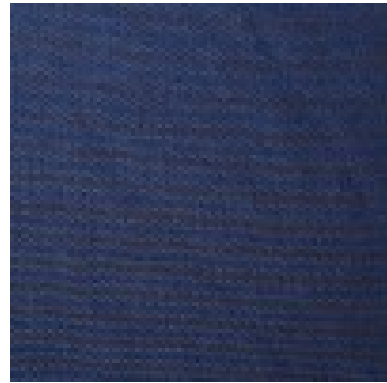
Volcano  
002



West Tip  
338



Zonda  
336



**Application:**

Upholstery fabric

**Composition:**

45% Wool, 45% FR Modacrylic, 10% Nylon

**Width:**

132cm Tolerance  $\pm 2\%$  usable

**Weight:**

414gms/m<sup>2</sup> Tolerance  $\pm 5\%$

**Abrasion:**

Tested in accordance with BS EN ISO 12947-2: 1999 as modified by Annex F of BS 2543: 2004 to 100,000 rubs Martindale. Meets requirements of BS 2543: 2004 and has been graded SEVERE CONTRACT suitable for all types of upholstery use

**Flame Retardancy:**

BS 7176: 2007 Low Hazard

BS 7176: 2007 Medium Hazard

BS EN 1021 - 1&2: 2006 (cigarette and match)

BS 5852: 2006 Ignition source 5

Note: Flammability performance is dependant on foam used

**Light Fastness:**

5+ (ISO 105 - B02: 1999)

**Fastness to Rubbing:**

Wet:4+ Dry:4+ (ISO 105 - X12:2002)

**Stain Repellance:**

Treated as standard

**Colour Matching:**

Batch by batch variations in shade may occur within commercial tolerances. We recommend that fabric be examined before use as no claims will be considered after cutting. None metallic dyestuffs are used in Flamblend

**Product Development:**

Specifications may be modified from time to time in accordance with our product development

**Fabric Care And Maintenance:**

Clean using a proprietary upholstery shampoo. Please see our cleaning guide for further information

**Technical Assistance:**

Our technical staff will be pleased to offer advice on F.R and other matters

**Availability:**

Generally ex-stock

**Guarantee:**

Fabric guaranteed for 5 years under normal wear and tear. See our Terms and Conditions