

Carnival

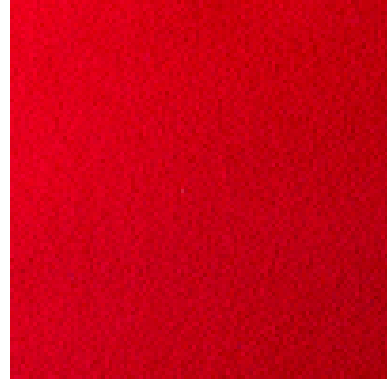
Almond
CAR843



Bordeaux
CAR820



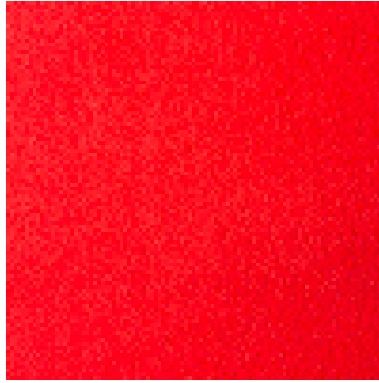
Carmine
CAR821



Colada
CAR842



Coral
CAR822



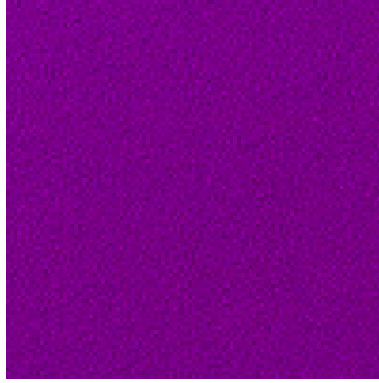
Dusk
CAR823



Fondant
CAR824



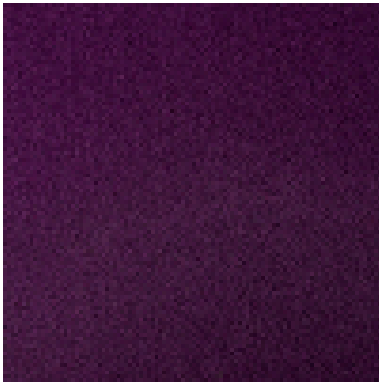
Foxy
CAR844



Inca
CAR825



Iris
CAR826



Jet
CAR827



Kiwi
CAR828



Lava
CAR829



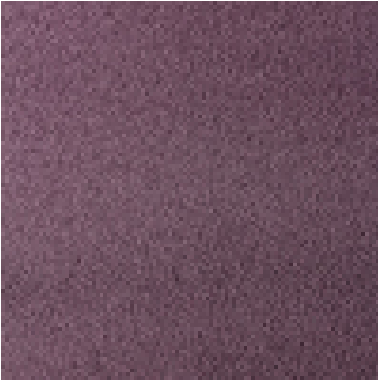
Lipstick
CAR847



Malibu
CAR830



Mocha
CAR831



Paprika
CAR832



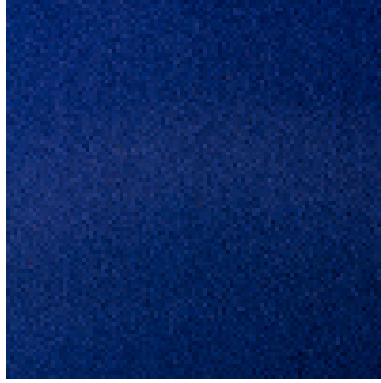
Racy
CAR848



Raisin
CAR850



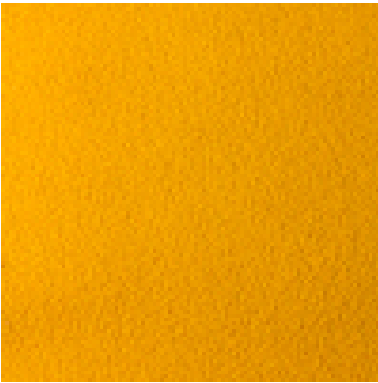
Regal
CAR833



Ribena
CAR849



Saffron
CAR834



Sea
CAR835



Silver
CAR836



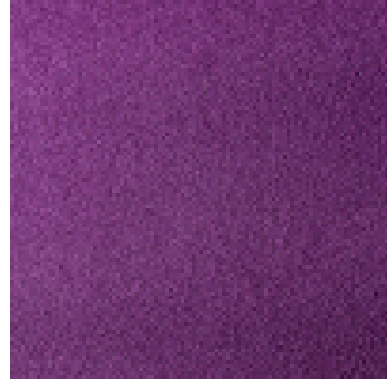
Slate
CAR837



Spruce
CAR838



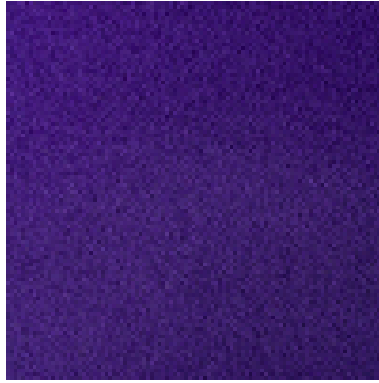
Thistle
CAR839



Tropic
CAR846



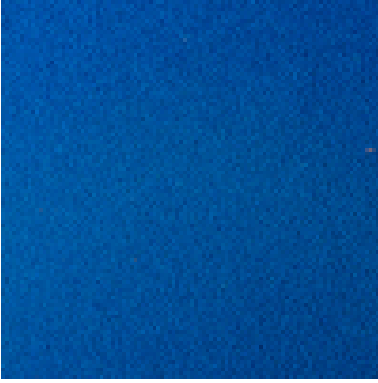
Ultra
CAR840



Wedgewood
CAR845



Yacht
CAR841



Application:

Upholstery Fabric

Composition:

85% Virgin Wool, 15% Nylon

Width:

140cm \pm 2%

Weight:

370gms/m² \pm 5%

Abrasion:

Tested in accordance with BS EN ISO 12947-2 1999 as modified by Annex F of BS 2546:2004 to 240,000 rubs Martindale.

Meets the requirements of BS 2543:2004 and has been graded 'SEVERE CONTRACT' suitable for all types of upholstery use and classification 24/7 usage.

Flame Retardancy:

BS EN 1021-1:2006 (Cigarette).

BS EN 1021-2:2006 (Match).

BS 7166.2007 Low Hazzard

BS 7166.2007 Medium Hazzard

BS 5852:2006 Ignition source 5

Note: Flammability performance is dependant on foam used.

Light Fastness:

BS EN ISO (105 - B02:1999)

Fastness to Rubbing Wet & Dry:

BS EN ISO 105 - X12:2002 - 4 - 5

Colour Matching:

Batch to batch variations in shade may occur within commercial tolerances. We recommend that fabric be examined before use as no claims will be considered after cutting.

Availability:

Generally ex-stock.

Product Development:

We reserve the right to change the specification of our product in line with our product development programme without notice.

Fabric Care and Maintenance:

Use a damp clean cloth with a solution of mild soap and lukewarm water. See our fabric care guide.

Technical Assistance:

Our technical staff will be pleased to offer advice on F.R. and other matters.

Guarantee:

Fabric guaranteed for 5 years under normal wear and tear. see our Terms and Conditions