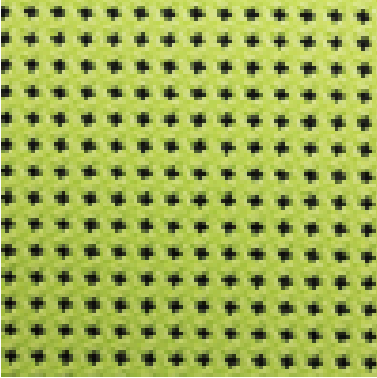
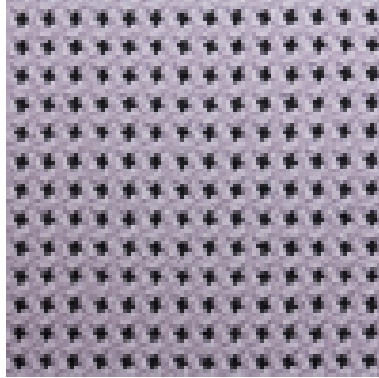


Fizz

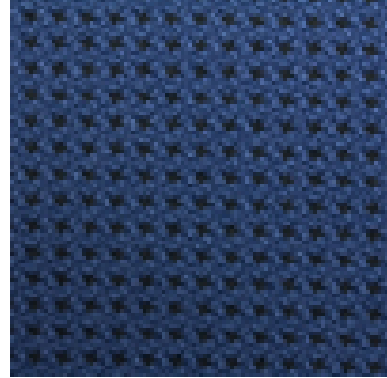
Atomic
053



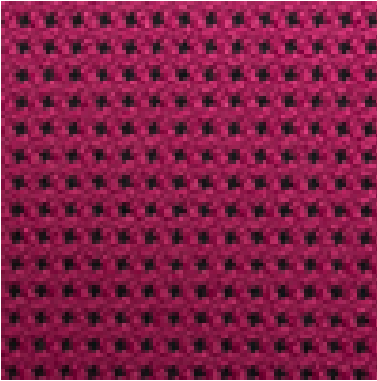
Aura
059



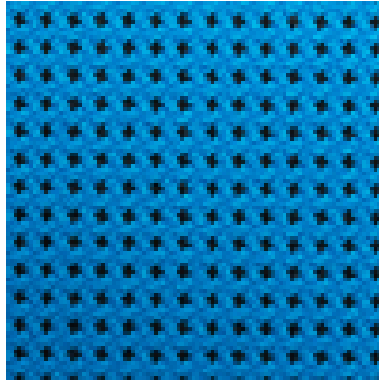
Baltic
068



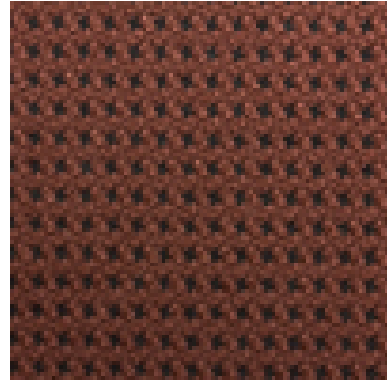
Burgon
060



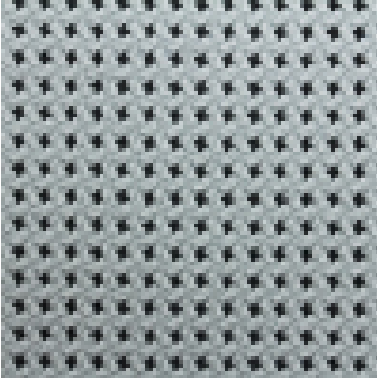
Capri
058



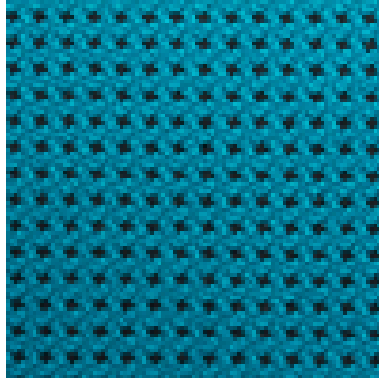
Chestnut
067



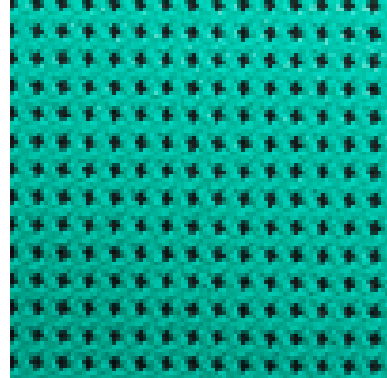
Dove
063



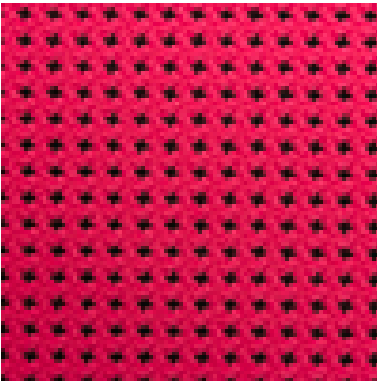
Drake
062



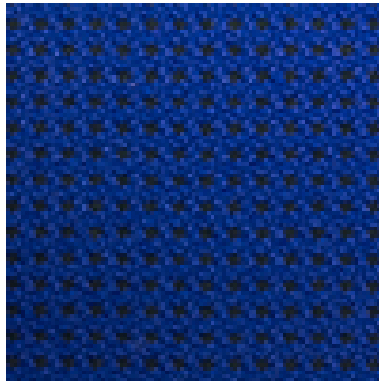
Energy
056



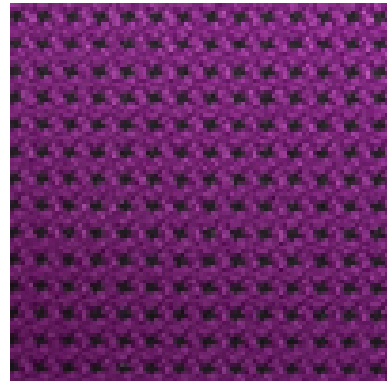
Fusion
055



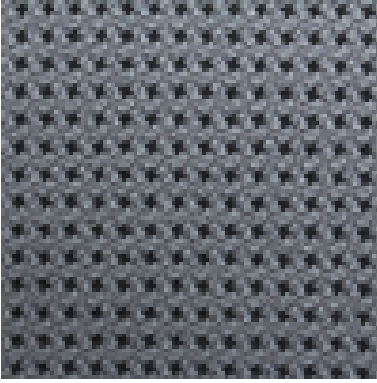
Indigo
069



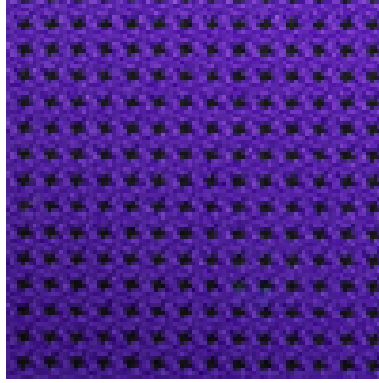
Jasmine
064



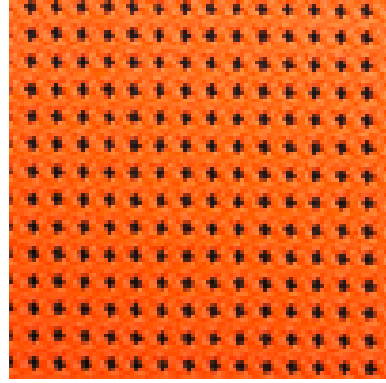
Lava
066



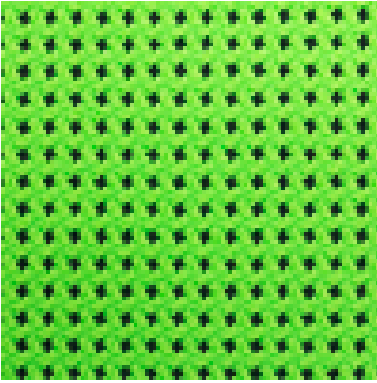
Mardi Gras
061



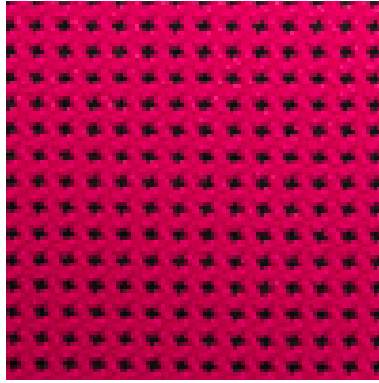
Meltdown
050



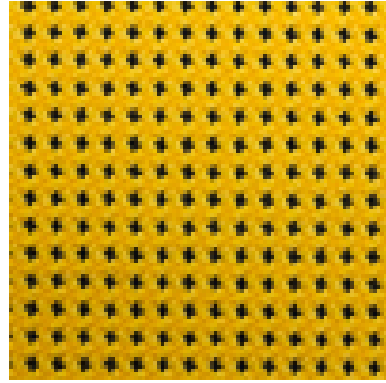
Reaction
052



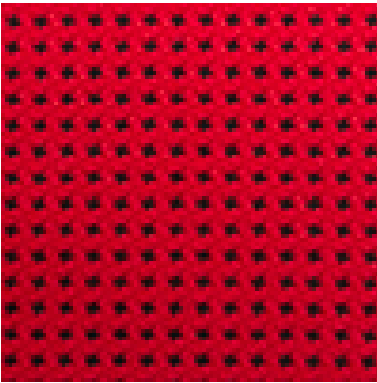
Rubine
057



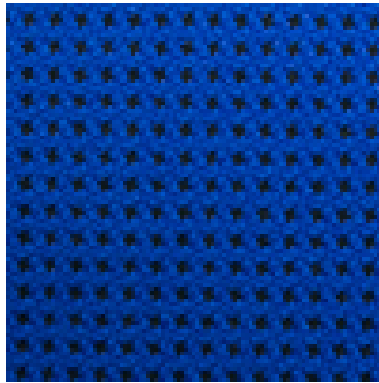
Saffron
051



Scarlet
054



Verona
065



Application:

Upholstery fabric, ideal for task & operator seating

Composition:

100% Polyester

Width:

140cm Tolerance + 2% usable

Weight:

350gms/m² Tolerance + 5%

Abrasion:

BS 2543: 2004 80,000 Martindale cycles

Flame Retardancy:

BS 7176: 2007 Medium Hazard

BS 7176: 2007 Low Hazard

BS EN 1021- 1&2: 2006 (cigarette/match)

BS 5852: 2006 Ignition source 5

Note: Flammability performance is dependent on foam used

Light Fastness:

5 (ISO 105 – B02: 1999)

Fastness to Rubbing:

5 (BS EN ISO 105 - X12: 2002) Scale 1-5, 5 is best

Colour Matching:

Batch to batch variations in shade may occur within commercial tolerances. We recommend that fabric be examined before use as no claims will be considered after cutting

Product Development:

We reserve the right to change the specification of our products in line with our product development program without notice

Fabric Care and Maintenance:

Clean using a proprietary upholstery shampoo. Please telephone our Sales Office for further information

Availability:

Generally ex-stock

Guarantee:

Fabric guaranteed for 5 years under normal wear and tear. See our Terms and Conditions