

Nevada Quilted

Caesars
Q600



Circus
Q607



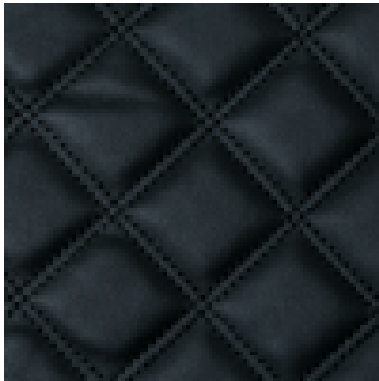
Luxor
Q618



Mandalay
Q604



Mirage
Q690



Venetian
Q625



Wynn
Q623



Application:

Upholstery faux leather suitable for soft seating

Composition:

Face - 100% Polyurethane

Backing - 67% Polyester, 33% Cotton

Width:

140 cms + 2% usable

Weight:

679 gms (uncoated)

Abrasion:

BS EN ISO 5470-2 : 2003 Method 1 > 200,000 Rubs

Flame Retardancy:

BS EN 1021 – 1: 2006 (Cigarette)

BS EN 1021 – 2 (Match)

BS 7176: 2007 Low Hazard

Note: Flammability performance is dependent on foam used.

Note: NEVADA QUILTED meets Low Hazard FR standards, therefore we recommend that a Crib 5 interliner is used to enhance its FR properties.

Tensile Strength:

BS EN ISO 13934-1 : 1999

Lengthway 700N, Widthway 470N

Tear Resistance:

BS EN ISO 13927-2 : 2000

Torn across length 45N, Torn across width 80N

Light Fastness:

BS EN ISO 105 – B02 : Method 3 to Standard – 4

Fastness to Rubbing:

BS EN ISO 105 – X12 : 2002

Wet & Dry:

4-5 (Wet & Dry)

Colour Matching:

Batch to batch variations in shade may occur within commercial tolerances. We recommend that fabric be examined before use as no claims will be considered after cutting.

Availability:

Generally ex stock

Product Development:

We reserve the right to change the specification of our products in line with our product development program without notice.

Fabric Care and Maintenance:

Remove any spillages or stains with a damp cloth. Please refer to our cleaning and maintenance guide for additional details.

Technical Assistance:

Our Technical staff will be pleased to offer advice on F.R. and all other technical matters.

***These colours are also available in the Nevada range.**