

# Rio

Beach  
7071



Congo  
7235



Fiesta  
7410



Grande  
7180



Guava  
7122



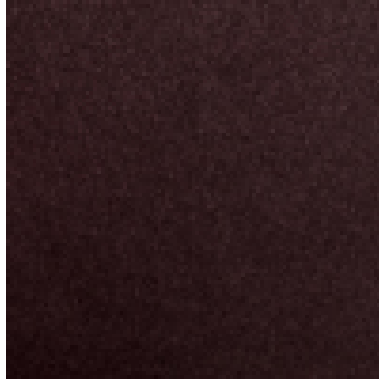
Jazz  
7912



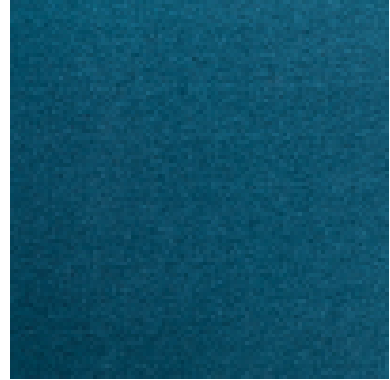
Pinto  
7515



Reggae  
7821



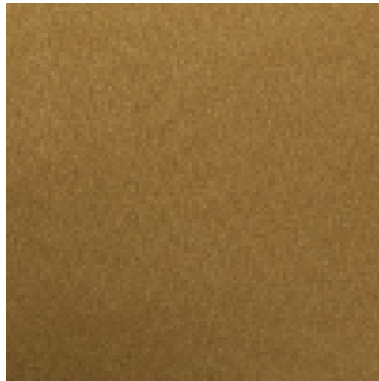
Salvador  
7406



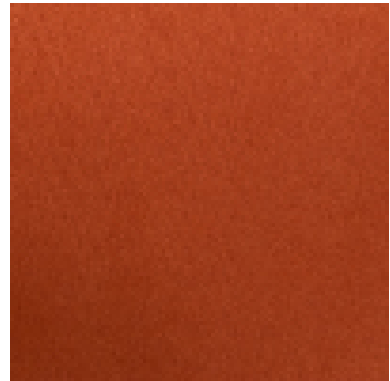
Sombrero  
7096



Taco  
7125



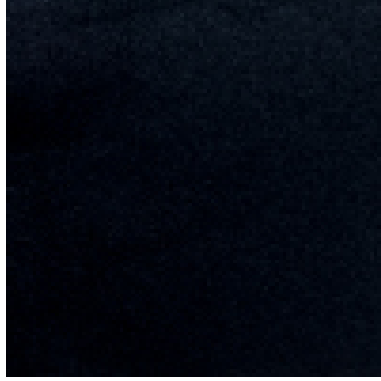
Tequila  
7127



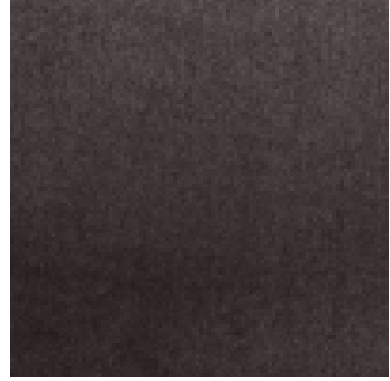
Vino  
7801



Voodoo  
7901



Zumba  
7812



**Application:**

Upholstery faux suede suitable for soft and restaurant style seating

**Composition:**

100% Polyester

**Width:**

145 cms + 2% usable

**Weight:**

275 gms/m<sup>2</sup>

**Abrasion:**

BS EN ISO 5470-2 : 2003 Method 1 > 40,000 Rubs

**Flame Retardancy:**

BS EN 1021 – 1: 2006 (Cigarette)

BS EN 1021 – 2 (Match)

BS 7176: 2007 Low Hazard

BS 7176: 2007 Medium Hazard

BS 5852: Section 4 Ignition Source 5

Note: FR back coating is applied to achieve FR levels.

Note: Flammability performance is dependent on foam used.

**Tensile Strength:**

BS EN ISO 13934-1 : 1999

Lengthway 1100N, Widthway 1000N

**Tear Resistance:**

BS EN ISO 13927-2 : 2000

Warp 91N, Weft 79N

**Light Fastness:**

BS EN ISO 105 – B02 : Method 3 to Standard – 4

**Fastness to Rubbing:**

BS EN ISO – X12 : 2002

**Wet & Dry:**

4 (Wet & Dry)

**Colour Matching:**

Batch to batch variations in shade may occur within commercial tolerances. We recommend that fabric be examined before use as no claims will be considered after cutting.

**Availability:**

Generally ex stock

**Product Development:**

We reserve the right to change the specification of our products in line with our product development program without notice.

**Fabric Care and Maintenance:**

Remove any spillages or stains with a damp cloth. Please refer to our cleaning and maintenance guide for additional details.

**Technical Assistance:**

Our Technical staff will be pleased to offer advice on F.R. and all other technical matters.