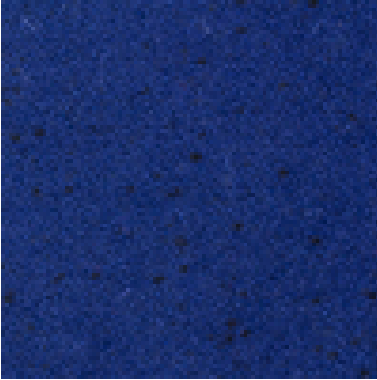
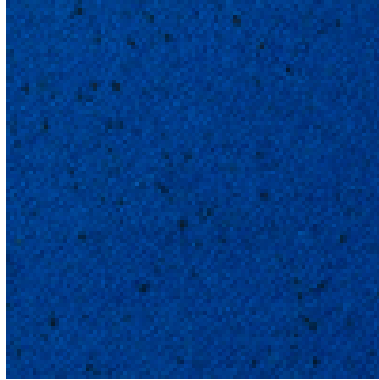


Blenheim

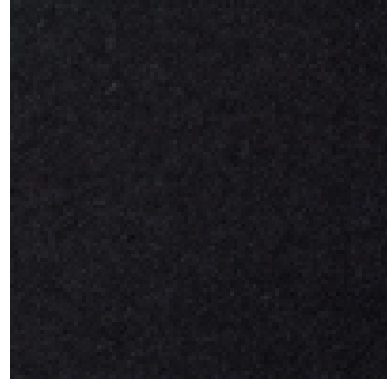
Amersham
701



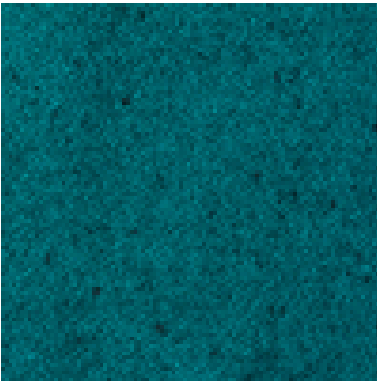
Banbury
703



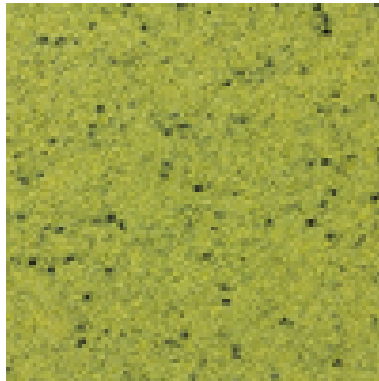
Bassett
704



Bicester
724



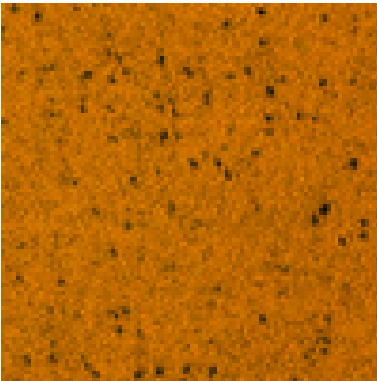
Calne
747



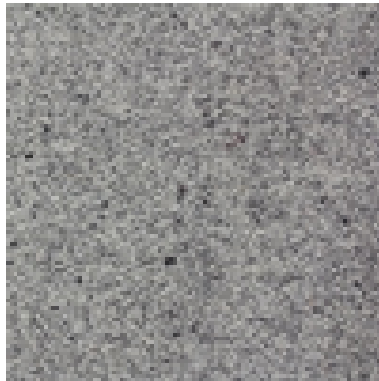
Charlbury
706



Chesham
707



Dapley
727



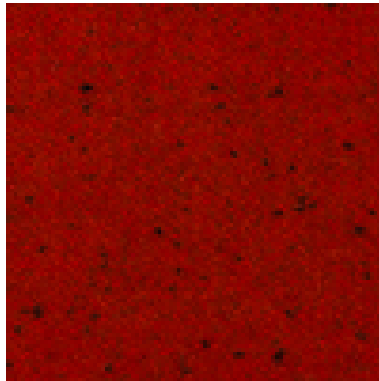
Evesham
728



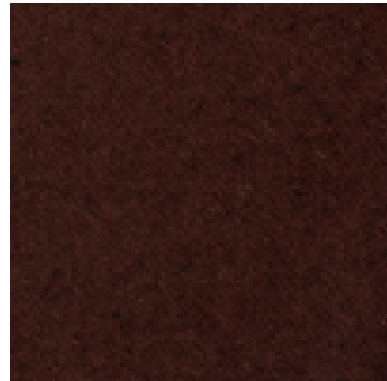
Malmesbury
731



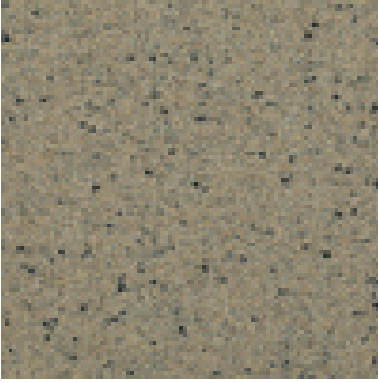
Norton
746



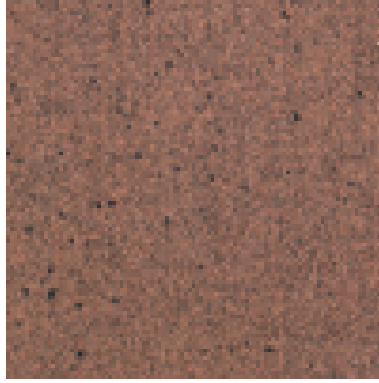
Oakley
733



Sandy
760



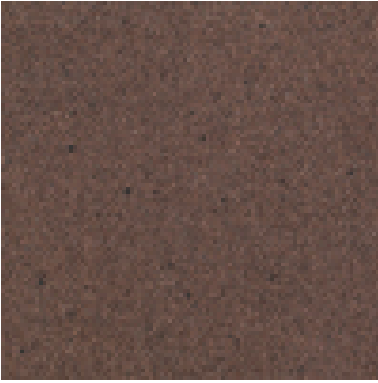
Shelford
758



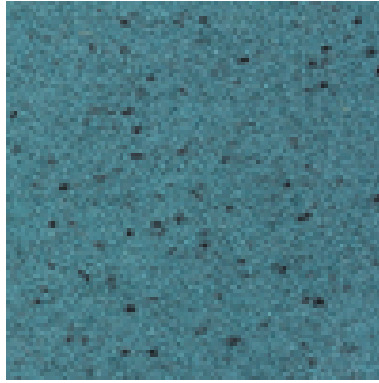
Studley
734



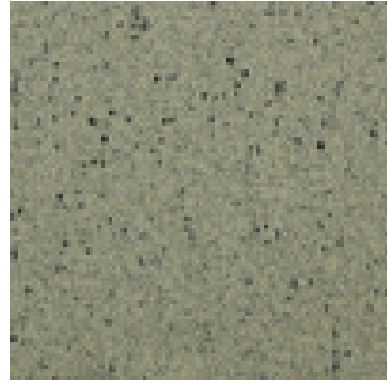
Tadley
759



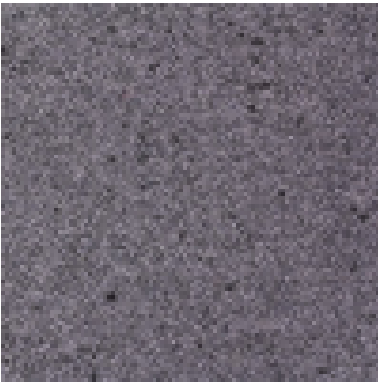
Thame
720



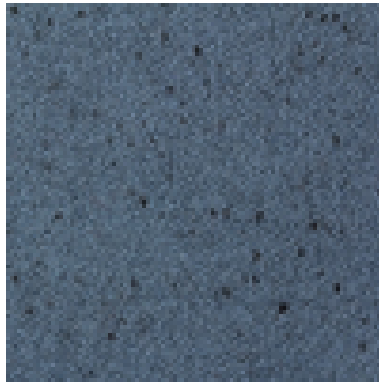
Wicken
753



Winson
736



Witney
722



Woodstock
723



Application:

Upholstery fabric suitable for soft and restaurant style seating

Composition:

90% Wool, 10% Nylon

Width:

140 cms + 2% usable

Weight:

520 gms/m² (730gms/linear m)

Abrasion:

BS EN ISO 5470-2 : 2003 Method 1 > 170,000 Rubs

Flame Retardancy:

BS EN 1021 – 1: 2006 (Cigarette)

BS EN 1021 – 2: 2006 (Match)

BS 7176: 2007 Low Hazard

Note: Flammability performance is dependent on foam used.

Additional Zirpro treatment required, please specify when ordering

BS7176: 2007 Medium Hazard

BS5852: Section 4 Ignition Source 5

Teflon Treated:

Superior stain resistance and water repellancy with inherent Teflon treatment

Tensile Strength:

BS EN ISO 13934-1 : 1999

Lengthway 570N, Widthway 340N

Tear Resistance:

BS EN ISO 13937-2 : 2000

Torn across length 40N, Torn across width 45N

Light Fastness:

BS EN ISO 105 – BO2 : Method 3 to Standard – 4

Fastness to Rubbing:

BS EN ISO 105 – X12 : 2002 – 4-5 (Wet & Dry)

Colour Matching:

Batch to batch variations in shade may occur within commercial tolerances. We recommend that fabric be examined before use as no claims will be considered after cutting.

Availability:

Generally ex stock

Product Development:

We reserve the right to change the specification of our products in line with our product development program without notice.

Fabric Care and Maintenance:

Vacuum regularly to remove dust and any surface soiling. Use a damp cloth with warm water for more stubborn staining or soiling. Please refer to our cleaning and maintenance guide for additional details.

Technical Assistance:

Our Technical staff will be pleased to offer advice on F.R. and all other technical matters.